



SPRINGFIELD CATHOLIC SCHOOLS

Springfield Catholic High School
2340 South Eastgate
Springfield, MO 65809
417-887-8817 · Fax:417-885-1165
www.scspk12.org/schs1

2011-2012 School Profile CEEB 263295

MISSION STATEMENT

The mission of Springfield Catholic Schools is to prepare students, with God's help, to spread the Kingdom of God and to contribute to the world as responsible Christian citizens by providing a caring family environment where the Catholic faith is taught and modeled in an atmosphere of academic excellence.

Our school provides a disciplined environment in which all students are active participants in the learning process that encourages academic excellence. Setting goals and solving problems together provide opportunities for each student to develop into responsible and productive citizens in accordance with individual needs, interests, and abilities. Our graduates will be prepared to accept responsibility and to perform service in a changing global society.

THE COMMUNITY

Springfield is located in southwest Missouri, 160 miles south of Kansas City and 210 miles southwest of St. Louis. The population of the Springfield Metropolitan Statistical Area is approximately 350,000. Springfield has a healthy, diversified economy and serves as the cultural and trade center of Southwest Missouri.

ENROLLMENT 2011-12

Freshmen Class	82
Sophomore Class	90
Junior Class	72
Senior Class	89
Total Enrollment	333

FACULTY/STAFF

Classroom Teachers 26
Librarian 1.0
Academic/College Advisor 1.0
Athletic Director 1.0
Administrators 1.0

DUAL ENROLLMENT COURSES

Springfield Catholic partners with Missouri State University and Drury University to offer the following Dual Enrollment courses:
English IV
College Algebra
Art III
Art IV

ADVANCED PLACEMENT (AP)

Springfield Catholic offers Advanced Placement courses in the following subjects:
AP English 3, AP English 4, AP American History, AP Psychology, AP Human Geography, AP Calculus, AP Biology, AP Environmental Science, AP Chemistry, AP Computer Science, AP Music Theory.
Advanced Placement Courses receive 1 additional grade points. Students may take the AP test to earn college credit.

WEIGHTED CLASSES

French 3, French 4, Spanish 3, Spanish 4, Pre-Calculus, College Algebra, Chemistry II, Physics I, Physics II, Art 3, Art 4, Anatomy and Physiology
Weighted classes receive .7 additional grade points.

CLASS RANK

As of July 2009, the practice of reporting class rank has been discontinued at SCHS. Only the ranks of valedictorian and salutatorian will continue to be recognized based on students' accumulative grade point averages at the end of the third quarter of the senior year. Instead of reporting class rank or percentage in class, a student's GPA will be reported on the transcript and a GPA distribution chart is made available on the SCHS profile.

Academics will further be recognized by the following academic honors system:
4.00 or better Summa Cum Laude
3.75 – 3.99 Magna Cum Laude
3.5 – 3.74 Cum Laude

We strongly encourage full attention to admissions and scholarship considerations based on rigor of course work, grades earned, and college admissions testing rather than any emphasis placed on class rank or percentile.

GRADING SCALE

94-100	=	A
93	=	A-
92	=	B+
86-91	=	B
85	=	B-
84	=	C+
78-83	=	C
77	=	C-
76	=	D+
75-71	=	D
70	=	D-
0-69	=	F

GRADUATION REQUIREMENTS

	Class of 2012
Theology	4 Units
English	4 Units
Social Studies	4 Units
Math	3 Units
Science	3 Units
Health	½ Unit
Physical Education	1 Unit
Speech	½ Unit
Fine Arts	1 Unit
Practical Arts	1 Unit
<u>Electives</u>	<u>10 Units</u>
TOTAL	32 Units

POST SECONDARY PLANNING

Generally 98% of our graduates attend college. Over the last five years, approximately 96% attended 4-year institutions and 3% attended 2-year schools.

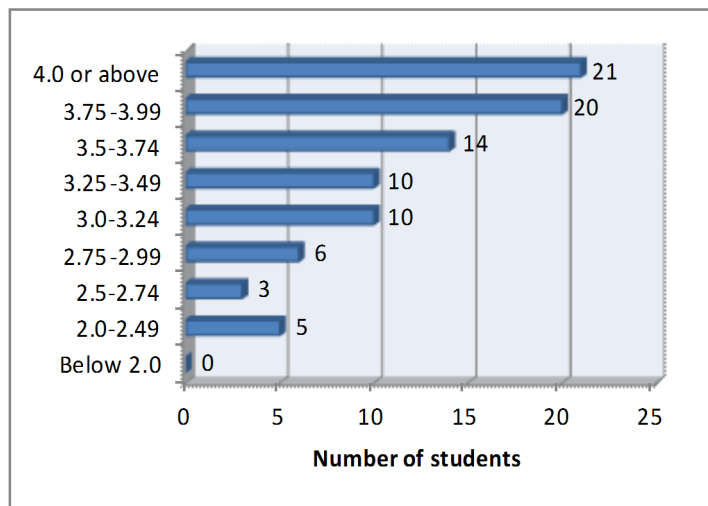
In the class of 2011:

- 95% 4-year college
- 5% 2-year college
- 0% work/military/undecided

Higher Education Preparation— Class of 2011

- 100% of our seniors took the ACT with an Average score of 25.3
- 86% scored above the national average of 21
- Our seniors were offered more than \$5.6 million in scholarships

2011 Senior Class GPA Distribution converted to 4.0 scale



In 2010-11 the Acton Institute recognized Springfield Catholic High School as one of the top 50 Catholic High Schools in America!

SCHS ACT TRENDS

Year	Eng	Math	Reading	Science	Composite
2006-07	26.3	25.2	26.3	24.8	25.8
2007-08	25.4	24.3	25.5	24.5	25.1
2008-09	25.9	24.4	26.0	24.3	25.3
2009-10	25.9	24.9	25.3	24.4	25.2
2010-11	25.8	24.7	26.0	24.4	25.3

Class of 2011 ACT Score Distribution

35—1	29—5	23—7
34—2	28—6	22—12
33—2	27—4	21—5
32—2	26—4	20—3
31—6	25—10	19—3
30—7	24—9	18 or below -4



STUDENT ACTIVITIES

Sports Teams

- Baseball
- Basketball
- Cross Country
- Football
- Golf
- Soccer
- Tennis
- Track & Field
- Volleyball
- Wrestling

Clubs & Organizations

- Green Club
- Art Club
- French Club
- Spanish Club
- National Honor Society
- Drama Club
- Fellowship of Christian Athletes
- Student Leadership
- Catholic Intelligence Agency

Other Activities

- Model UN
- Band
- Cheerleading
- Dance
- Choir
- Debate/Forensics
- Publications
- Math Competition
- Tri-M Music Society
- JETS
- Robotics
- Science Olympiad

Dr. Amy DeMelo, Principal
Scott Guilkey, Academic Advisor
Sam Wutke, Athletic Director
Lisa Tigges, Registrar
(417) 887-8817

